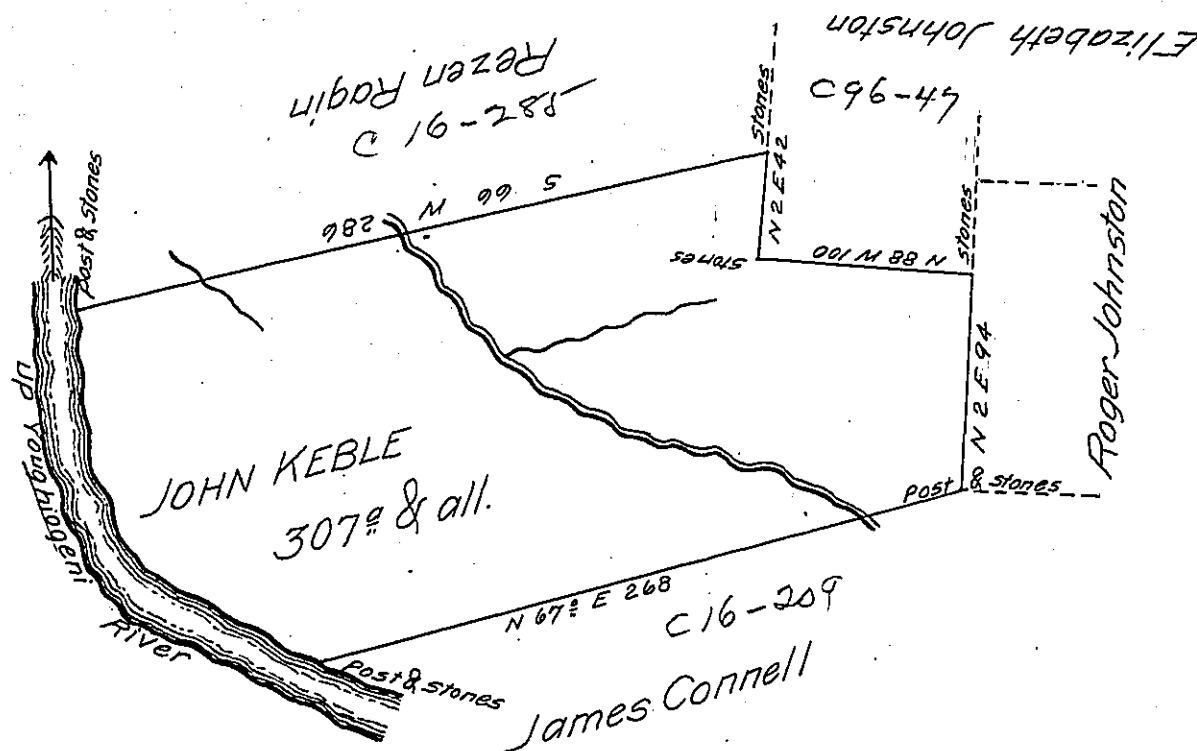


Courses and distances
up the River

- S 8 E 64.4
- S 29 E 39.6
- S 60 1/2 E 23.2
- S 72 1/2 E 64 to
post & stones



Situate on Laurel Run a Branch of Youghiogeni River that empties into the north side thereof above Rogins in Bullskin Township Fayette County and Surveyed the 3^d day of April 1795. In pursuance of a Warrant dated the 29th day of November 1784

By Alexander McClean Deputy

To Daniel Brodhead Esquire
Surveyor General

IN TESTIMONY that the above is a copy of the original remaining on file in the Department of Internal Affairs of Pennsylvania, made conformably to an Act of Assembly approved the 16th day of February, 1833, I have hereunto set my Hand and caused the Seal of said Department to be affixed at Harrisburg, this seventeenth day of July 1905

Isaac S. Brown
Secretary of Internal Affairs.